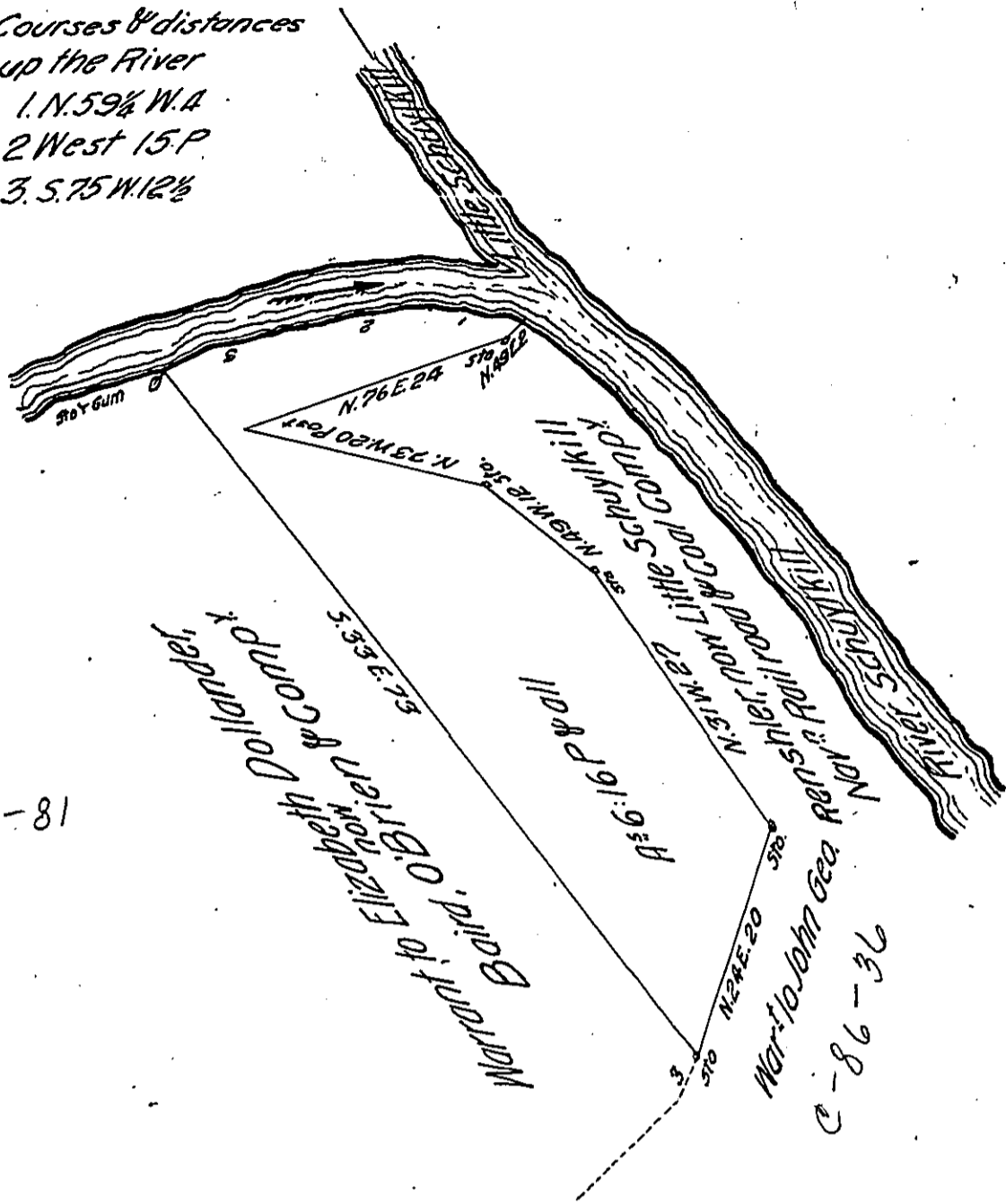


Courses & distances
 up the River
 1. N. 59 1/4 W. 4
 2 West 15 P
 3. S. 75 W. 12 1/2



B-81

Situate at the Blue Mountain, in Upper Bern township Berks County, Surveyed in Pursuance of a Warrant dated the tenth day of October AD. 1839 granted to Matthias S. Richards, Containing Six acres and sixteen perches and allowance of 6 Per. Cent for roads &c November 11th 1839.

To Jacob Sallade, Esquire
 Surveyor General of Penn^a

Mich^l K Boyer

Dep^y Sur^y

IN TESTIMONY that the above is a copy of the original remaining on file in the Department of Internal Affairs of Pennsylvania, made conformably to an Act of Assembly approved the 16th day of February, 1833, I have hereunto set my Hand and caused the Seal of said Department to be affixed at Harrisburg, this twentieth day of August 1906

Lauch J. Brown
 Secretary of Internal Affairs.